

# North Huron 1-22 Plug and Reclaim

St. Anthony North Medical Campus



## THE PLUG & ABANDONMENT PROCESS

When a well is no longer economically producing oil and natural gas, the well is evaluated for retirement and will undergo a process called 'plug and abandonment,' or P&A as it is often called.

To retire, or P&A, a well, the operator must submit a plug and abandonment plan to the state regulatory authority, the Colorado Oil and Gas Conservation Commission (COGCC) for approval.

Once the plan is approved by the COGCC, the operator is required to inform the municipality where the well is located. Operators also communicate with surface land and mineral owners and surrounding neighbors regarding the retirement of the well.

### How a Well is Retired



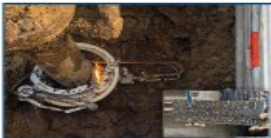
1

A workover rig arrives on-site. While the rig is on location, the well will be plugged per the plan approved by the COGCC. Cement is pumped into the well to cover and isolate the zones that produce oil and natural gas.



2

When the plugging operation is complete, the workover rig moves off the location, the well head is removed and the associated flowlines are excavated. Associated surface equipment (tanks, separators, etc.) may also be removed if it is not serving other active wells in the area.



3

The remaining portion of the well is cut a minimum of seven feet below the surface and an identifying marker is welded to the top of the plugged wellbore.



4

A final report is submitted to the COGCC to certify the wellbore has been plugged in accordance with the regulatory requirements.



5

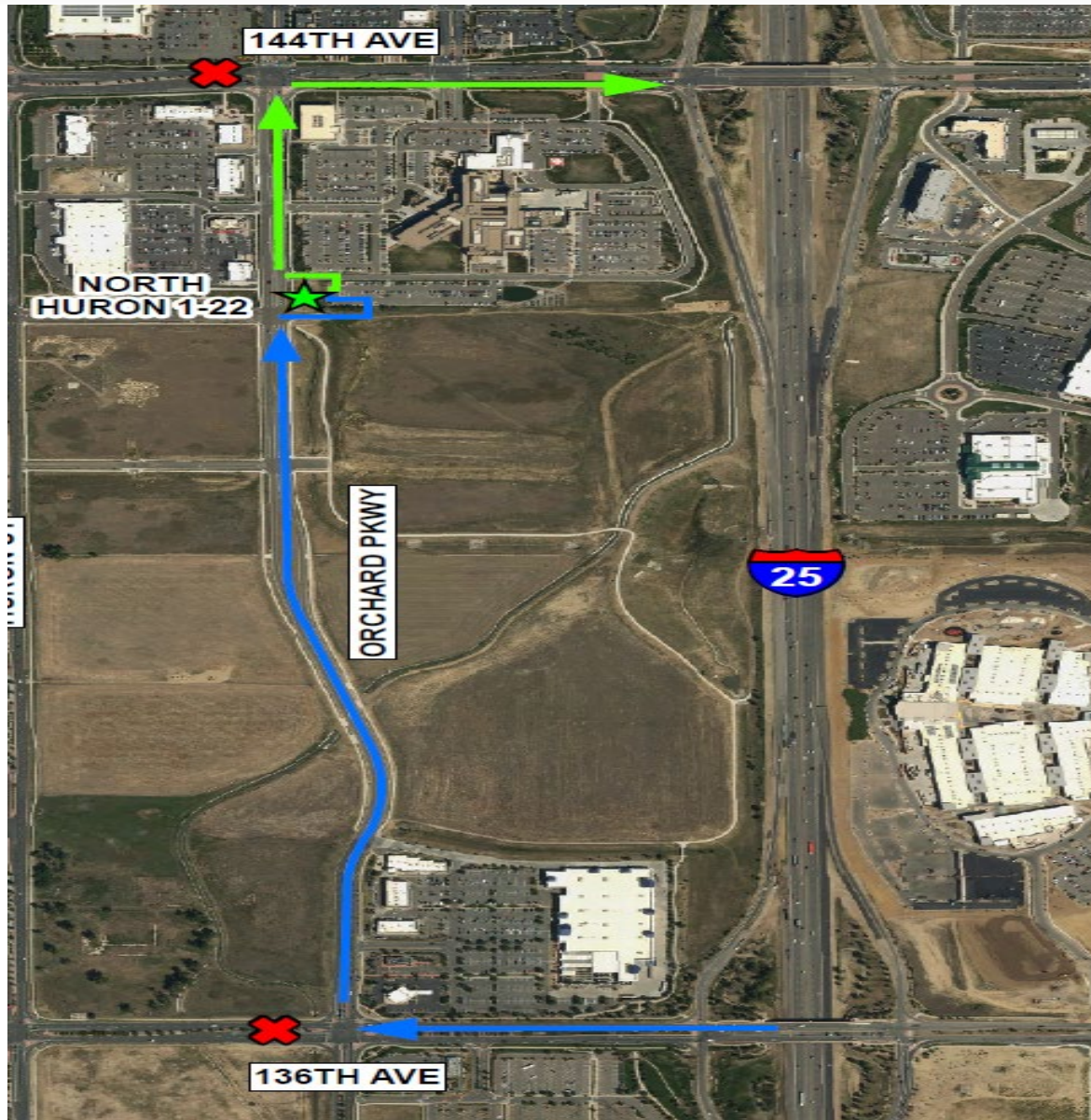
The site is reclaimed, or restored, to match the existing landscape.

# Traffic Route

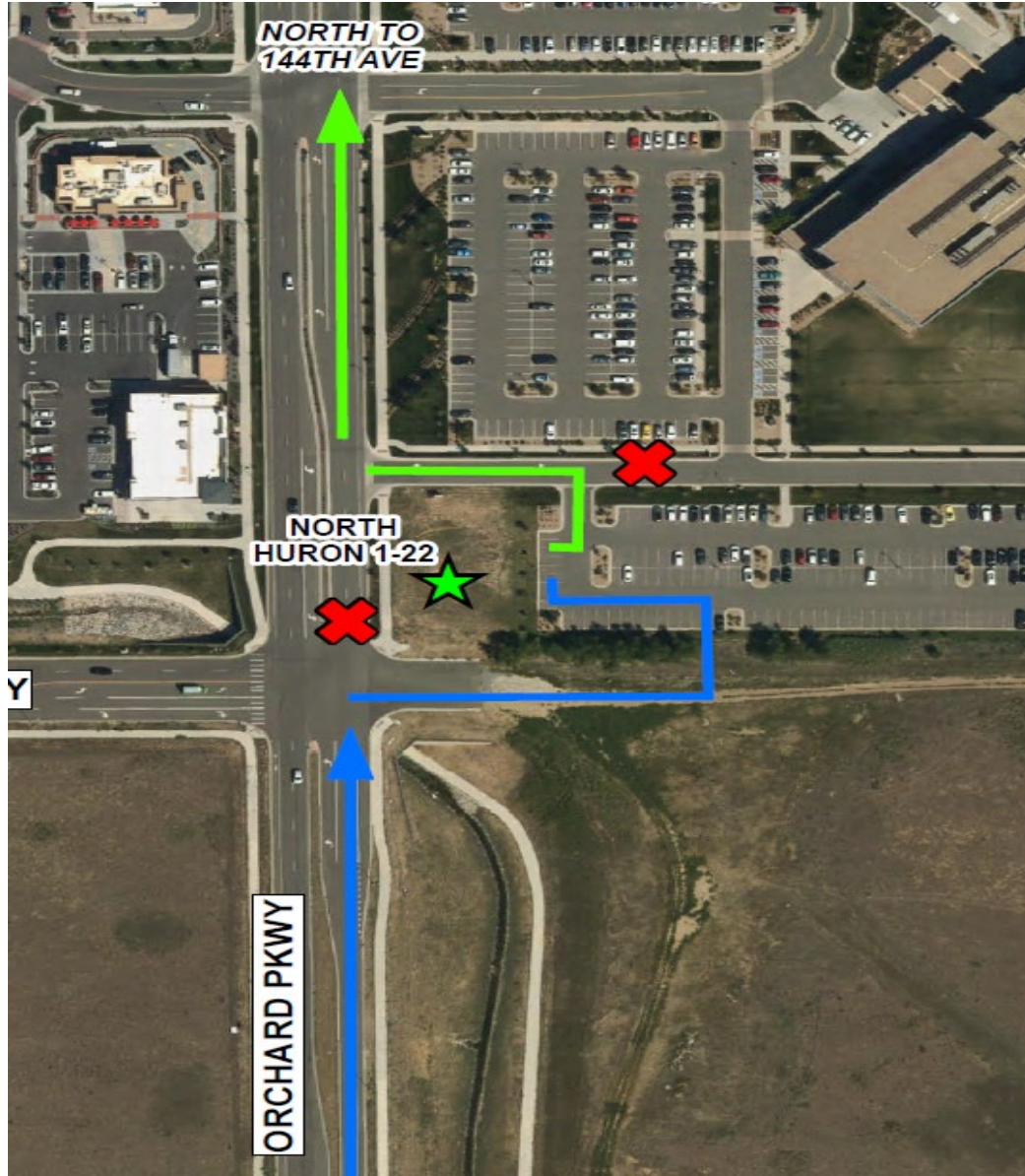
- Inbound Truck Route: From I-25, Westbound 136<sup>th</sup> Ave, North Bound Orchard Pkwy, Eastbound into location.
- Outbound Truck Route: Westbound out of location, Northbound Orchard Pkwy, Eastbound 144<sup>th</sup> to I-25.
- Location Inbound Truck Route will use part of our current access road. Some minor dirt work will be done to allow trucks to access our work area from the current access (blue line on enhanced location route).
- Location Outbound Truck Route will use the road to the north of the parking lot to leave location (green line on enhanced location route). We would like to request that a portion of this road be closed to allow us room to safely operate and prevent traffic congestion.



# Traffic Map

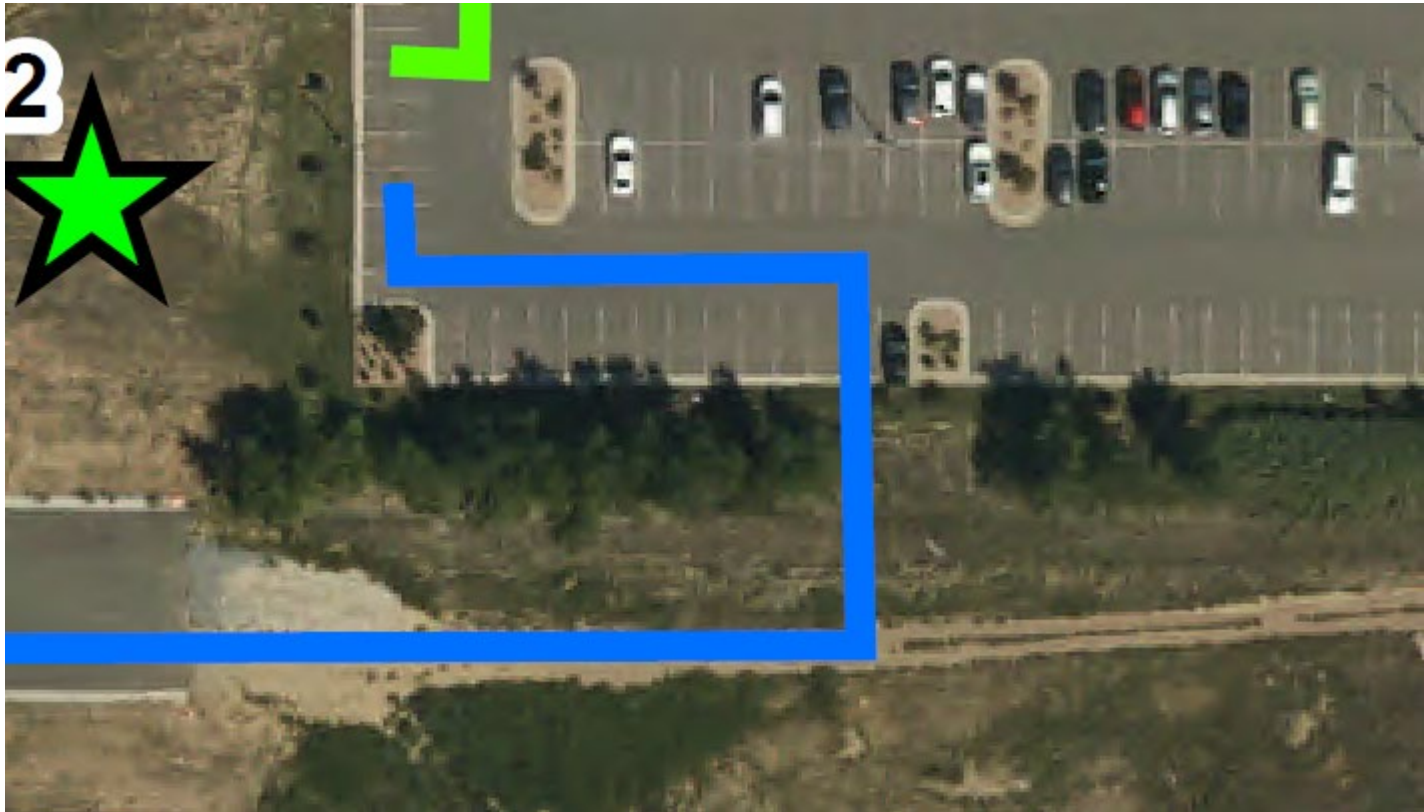


# Location Traffic Map Enhanced

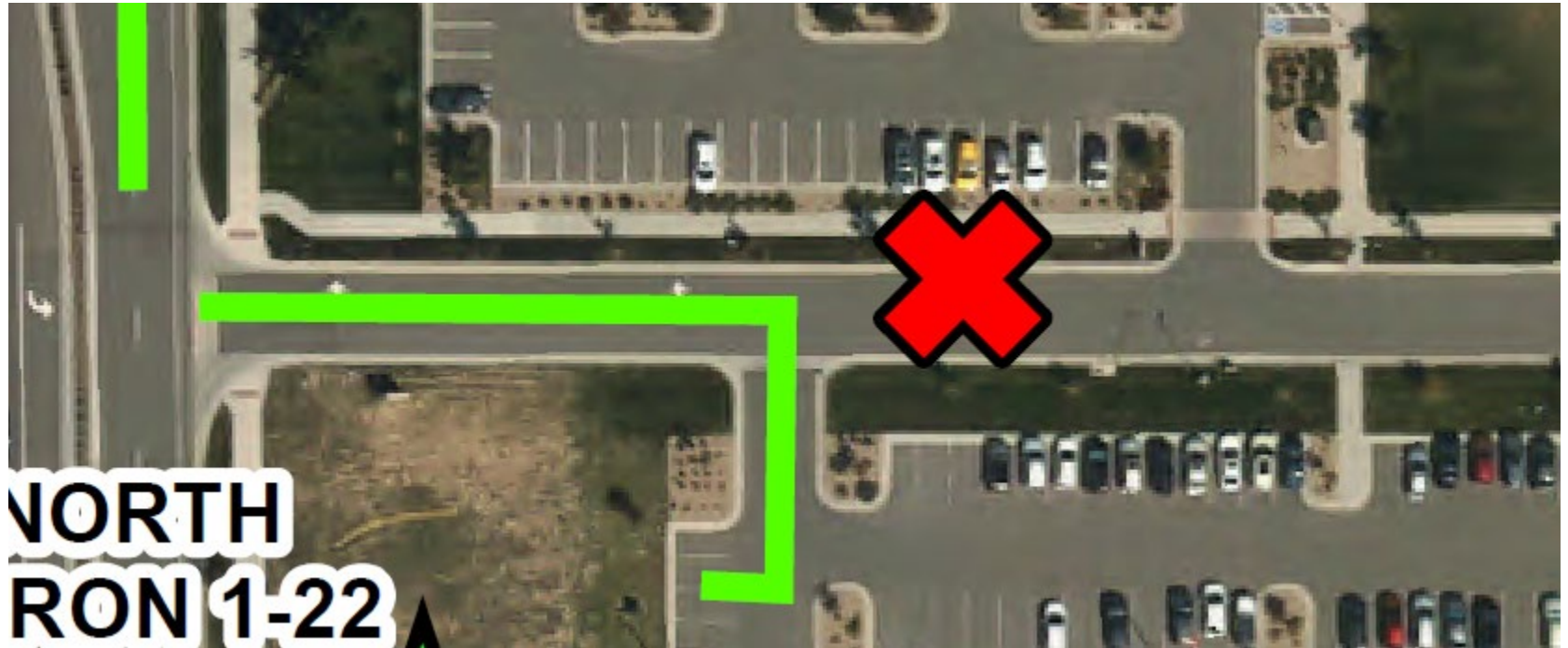




# Minor Dirt Work for Inbound Route



# Outbound Portion of Road to be Closed



# Outbound Portion of Road to be Closed

- Proposing road closed to eastbound traffic from Orchard Parkway and WB traffic leaving the Hospital.





# Site Layout



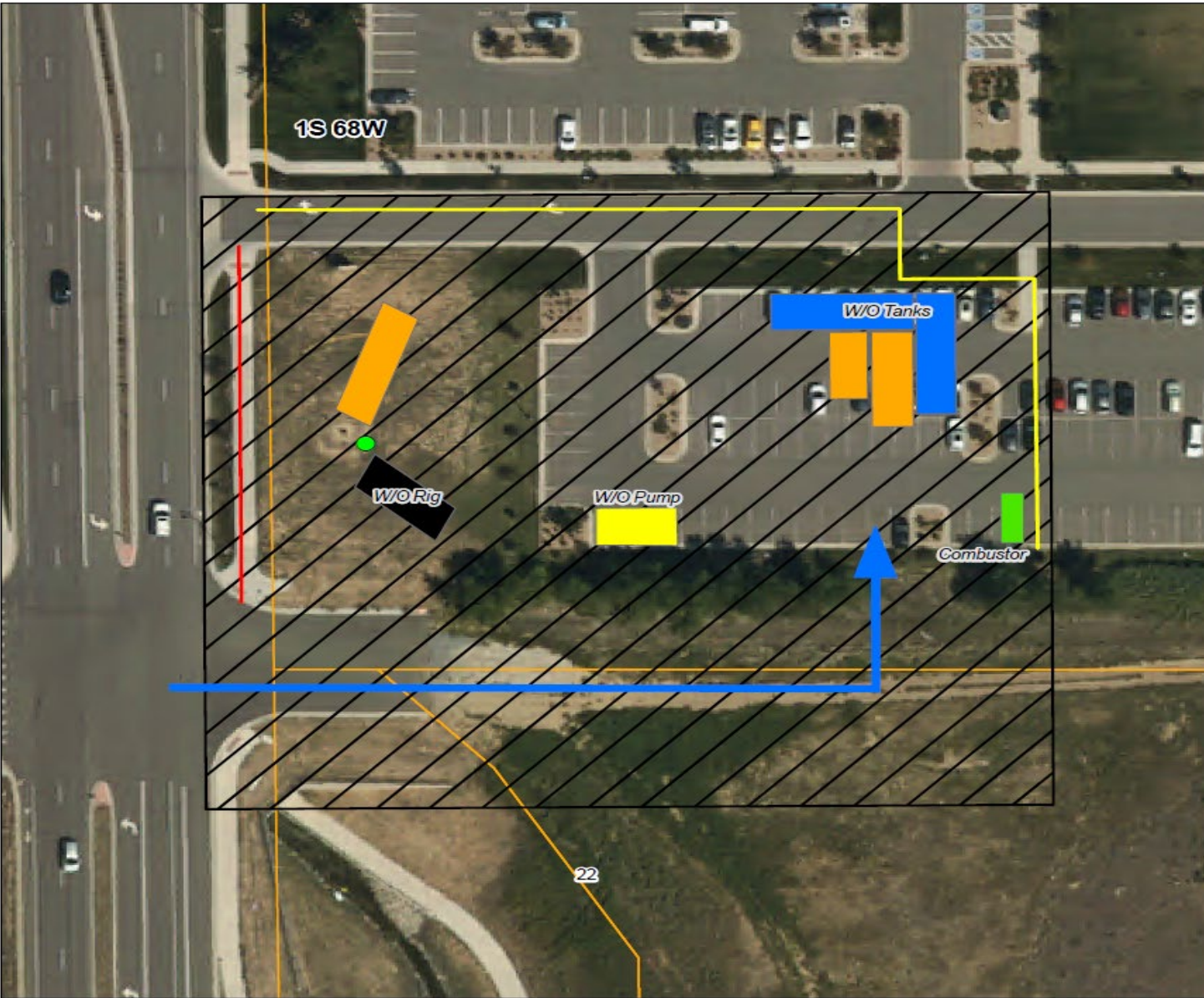
**Legend**

	North Huron 1-22		Equipment
	Operations Area		Rig
	Sound Wall (12 ft)		Combustor
	Sound Wall (20 ft)		Pump
	Access Road		WO Tanks



1 inch = 21 feet  
0 12.5 25 50 75 Feet

North Huron 1-22 Parcel Map T1S-R68W-Sec 22 - NWNW Adams County, CO.	
Scale: 1:250	PRJ: GCS NAD83
Date: 10/11/2019	Author: CMB



# Job Scope and Schedule

- Permanently plug and reclaim well site.
- Remove facility and reclaim site.
- Planning to begin work Mid-November 2019.
- Anticipated timeline 3-5 weeks to plug well, remove facility and conduct final reclaim.

# Summary of Activities

- Day 1: Recon Team will begin location prep for operations area at wellsite.
- Day 2: Set sound walls and construct perimeter fence around operations area.
- Day 3: Rig and support equipment move in and set up.
- Day 4-14: Rig conducts plugging operations.
- Day 15: Rig and support equipment leaves location.
- Day 15-20: Facility is removed.
- Day 20: Wellhead is cut and capped 8'-10' below surface.
- Day 21: Final reclaim on wellsite and facility begin.
  
- \*Schedule and timing is subject to change.



# Before and After of recently plugged well in Broomfield

Before: Brozovich MA8-15



After: Brozovich MA8-15

