

## eTRAKiT and Internet Explorer

eTRAKiT works best when used in Internet Explorer. Using any other browser can cause issues.

---

### USING INTERNET EXPLORER

- **Always make sure eTRAKiT is opened in Internet Explorer:**



- **eTRAKiT will not work properly when used in these browsers:**

Chrome

Edge

Fire fox

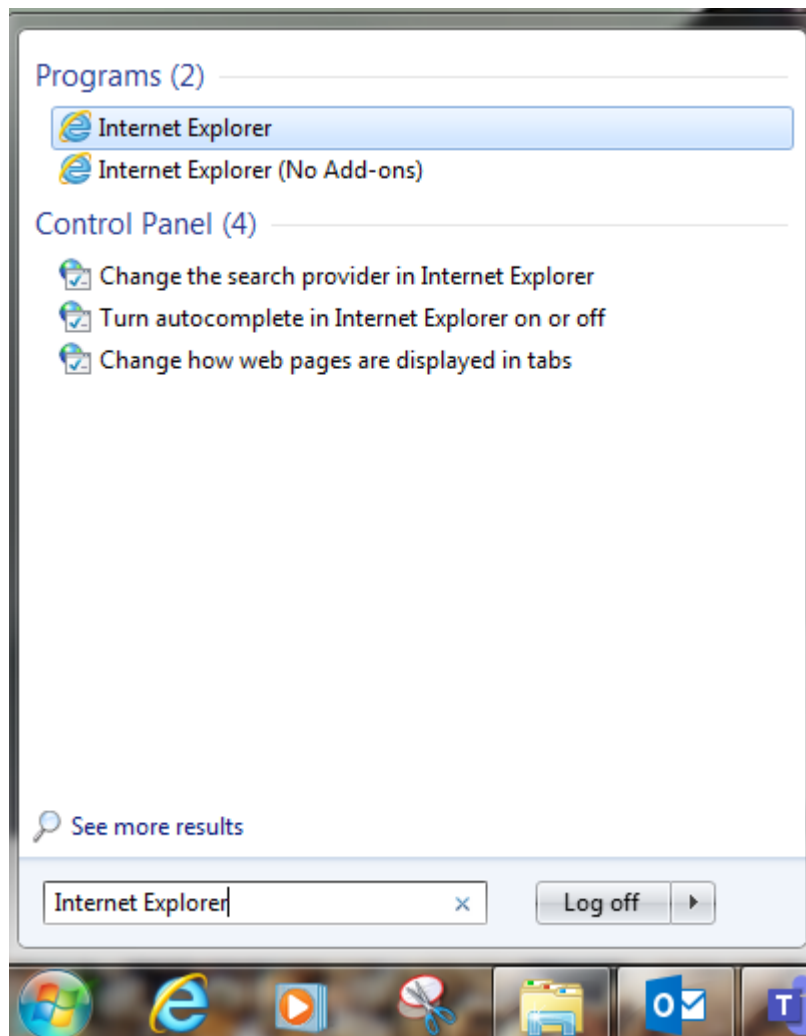
Safari



## HOW TO CHANGE THE INTERNET BROWSER

If using a browser other than Internet Explorer follow the directions below.

- Select the Start button (located in the bottom left hand of screen) and type Internet Explorer:

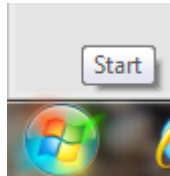


- Click the Internet Explorer hyperlink and the browser will open.

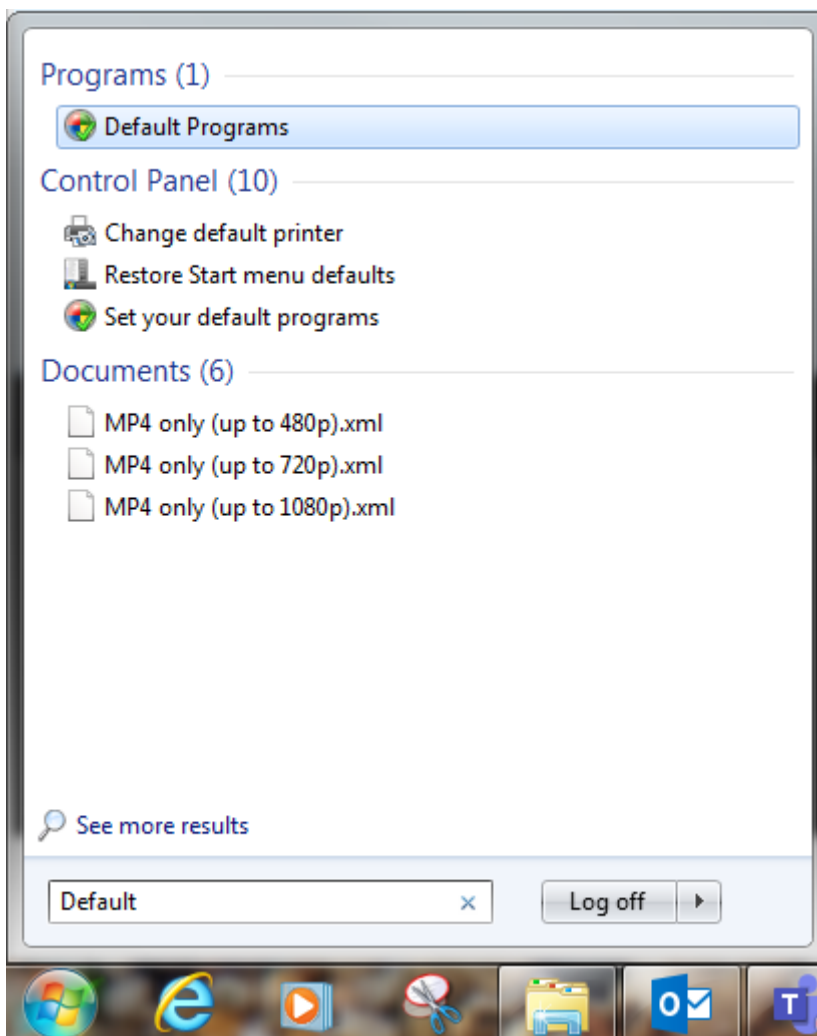
## HOW TO MAKE INTERNET EXPLORER THE DEFAULT BROWSER

To set Internet Explorer as the default browser follow the steps below.

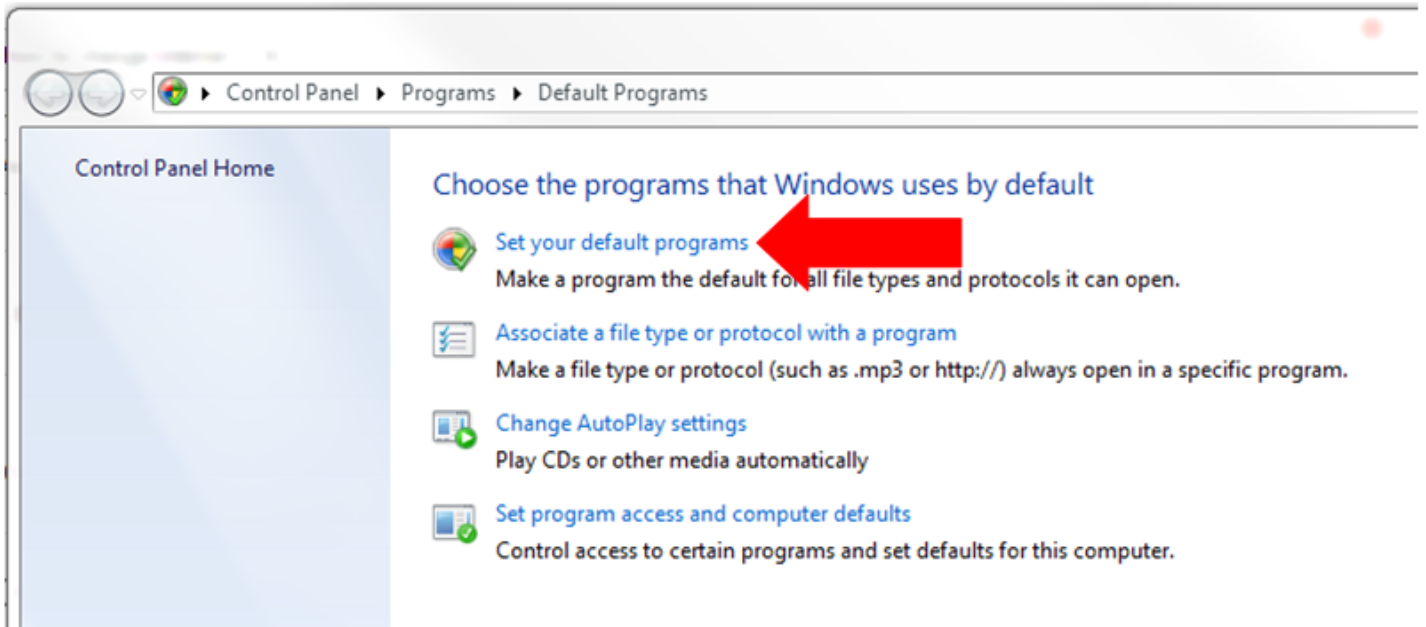
- Select the Start button (located in the bottom left hand of screen) and type Default.



- Depending on what version of Windows installed there will be a **Default Programs** option or **Default Apps** options.



- Chose “**Set Your Default Programs**” or “**Set Your Default Apps**”.



- In the **Set Your Default Programs** or **Set Your Default Apps** window, choose Internet Explorer, click **Set This Programs As Default**, and click **OK**.

#### Set your default programs

To set a program as the default for all file types and protocols it can open, click the program and then click Set as default.

